



RAM 300

COMUNELLO
AUTOMATION

Electromechanical actuators with telescopic rod for residential swing gates.
For leaves up to 3 m (max. leaf weight 300 kg) and up to 500 kg (max. leaf length 1.5 m).



24 VDC 230 VAC KIT

RAM 300

For swing leaves
up to 3 m

Ram is a line of telescopic **reversible** actuators for swing leaves up to 5 m. With their excellent resistance to any weather and Comunello-made mechanical parts, these actuators are built to last. A simple and quick emergency release lever adds to the safety and reliability of the actuator. The use of standard screw-fixed support brackets make these actuators extremely easy to install.



ARTICLE	RAM 300 24V	RAM 300 230V
Operating power supply	24 VDC	230 VAC
Power consumption	100 W	280 W
Max. absorption.	5 A	1,2 A
Max. thrust	2000 N	1800 N
Max stroke	374 mm	374 mm
Duty cycle	Intensive use	40%
Protection degree (IP)	IP44	IP44
Insulation class	2	1 (earthing)
Working temperature	-20°C / +50°C	-20°C / +50°C
Speed	21 mm/s	16 mm/s
Weight	15,6 kg	16,6 kg



RAM 300

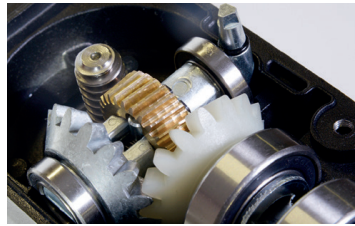
COMUNELLO AUTOMATION

STRONG



Monobloc die-cast aluminium casing and epoxy-powder coating for excellent resistance to any weather.

MECHANICAL MADE IN COMUNELLO



Perfectly-matching metallic transmission gears for maximum efficiency, precision, quiet movement and reliability.

SAFE



Irreversible motor. Easy-opening emergency release mechanism with die-cast aluminium handle.

LIMIT STOPS



Disc-spring closing limit switches guarantee a smooth return movement without overloading the operator.

FIXING



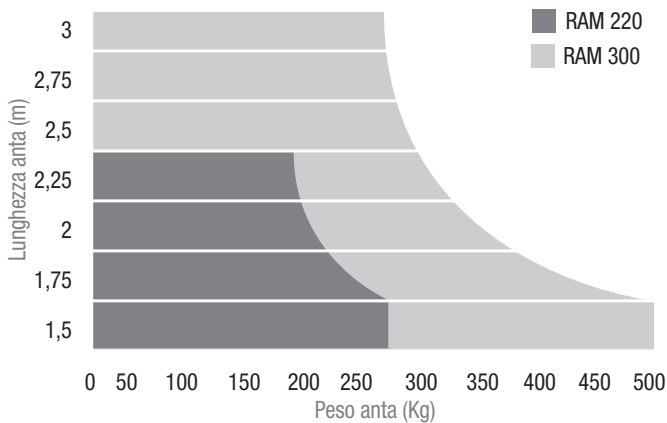
Stainless steel spindle and die-cast aluminium and zinc alloy front bracket for maximum reliability and durability.

REVERSIBLE

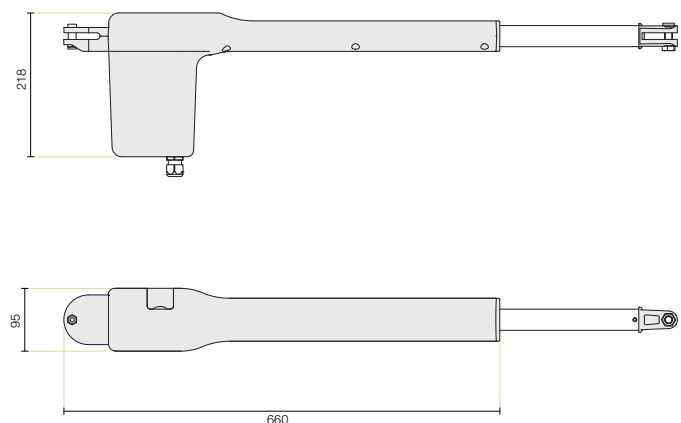


The actuator's symmetry and upper release mechanism allow the actuator to be assembled on both the left or right leaf.

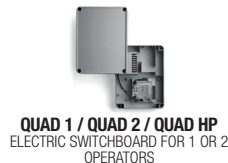
OPERATING LIMITS



SIZES



MAIN FITTINGS



PLEASE FIND A COMPLETE LIST OF ACCESSORIES ON WWW.COMUNELLO.COM